



TitanFTP

S E R V E R

Configuring IE7 for use with Titan FTP Server
Quick Start Guide

Notices

Information in this document is subject to change without notice. The software described in this document is furnished under a license agreement, OEM, or reseller agreement. The software may be used or copied only in accordance with the terms of those agreements. No part of this publication may be reproduced, stored in a retrieval system, or transmitted in any form or any means electronic or mechanical, including photocopying and recording for any purpose other than the purchaser's personal use without the written permission of South River Technologies, Inc.

South River Technologies, Titan MFT Server, Titan FTP Server, WebDrive, and GroupDrive are registered trademarks of South River Technologies, Inc. in the U.S. and other countries. Microsoft, Windows, Windows NT, Windows XP, and Windows Vista are registered trademarks of Microsoft Corporation, Inc. The names of other actual companies and products mentioned herein may be the trademarks of their respective owners. Any information in this document about compatible products or services should not be construed in any way to suggest SRT endorsement of that product or service.

South River Technologies, Inc.
179 Admiral Cochrane Drive
Suite 110
Annapolis, Maryland 21401
USA
Telephone: 410-266-0667
Fax: 410-266-1191
www.southrivertech.com

Thank you for purchasing Titan FTP Server®.

The following instructions will help you to set up IE7 for use with Titan FTP Server. If you need additional assistance the [Titan FTP User Guide](#) is available online. Also, a listing of Frequently Asked Questions (FAQ) is available at our [Knowledgebase Support Center](#).

System Requirements

Supported Platforms

The following Windows platforms are supported:*

- Windows Vista (Ultimate, Business, or Enterprise), 32-bit or 64-bit
- Windows 2008, 32-bit or 64-bit
- Windows Server 2003, 32-bit or 64-bit
- Windows XP Pro, 32-bit or 64-bit
- Windows 2000 Pro, Server, and Advanced Server

*Windows NT v4, Windows 9x (95, 98, ME) are not supported.

Requirements & Limitations

Titan FTP Server is a multi-threaded, dynamic SFTP/FTPS/FTP Server for the Windows operating system. While it is designed to handle an unlimited number of user connections and servers, it is limited by the resources of the machine; most notably, those limitations imposed by the Windows Sockets (WINSOCK) Library.

The minimum hardware requirements for Titan FTP Server are:

- A 1GHz Pentium class processor is required, 2GHz is recommended
- 512MB of RAM is required, 1GB is recommended
- Minimum 100MB of disk space for the Titan program and 100MB for each FTP Server configuration
- Minimum SVGA (800x600) resolution is required to run the Administration program
- All Windows Service Packs and Hot Fixes must be applied to the PC prior to installing Titan FTP Server

Installing Titan FTP Server

1. Make sure you have the most recent version of Titan FTP Server. You can use the *Check for Program Update* utility, found in the Titan FTP Program group.
2. Double-click the **Installation file** to start the installation process. NOTE: If you are installing Titan FTP Server on Windows Vista, you must right-click on the installation/setup file and select **Run As Administrator**.
3. Once the installation process is complete, you will need to restart Windows.

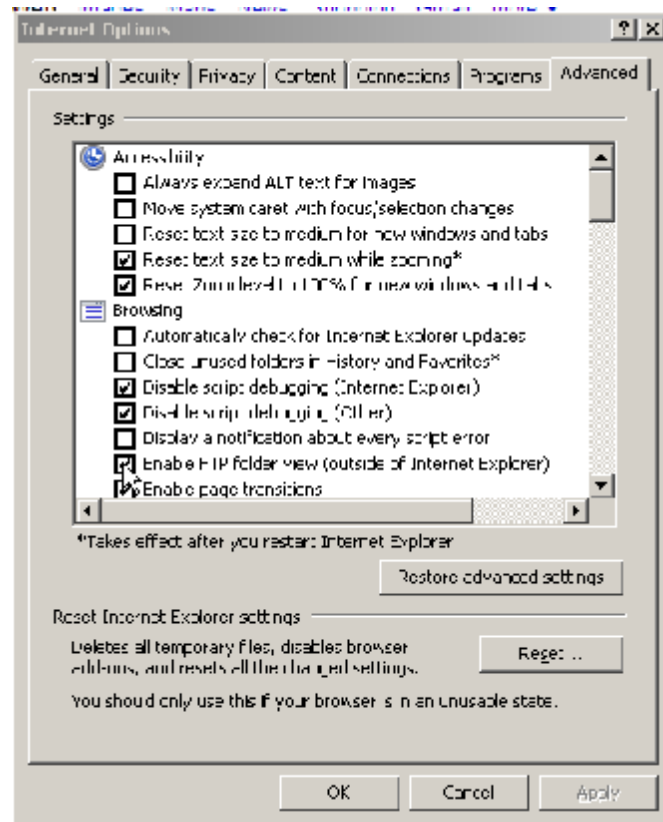
After Windows has restarted, the Titan FTP Service will be running. The Titan FTP Service runs as a system service and starts when the operating system loads. You can monitor the status of the Titan FTP Service using the Windows Services applet in the Administrative Tools folder of the Windows Control Panel.

4. Once Titan FTP Server has been installed, you can begin to configure your FTP Servers. This is done using the Titan Administrator program located in the Titan FTP Server program group.

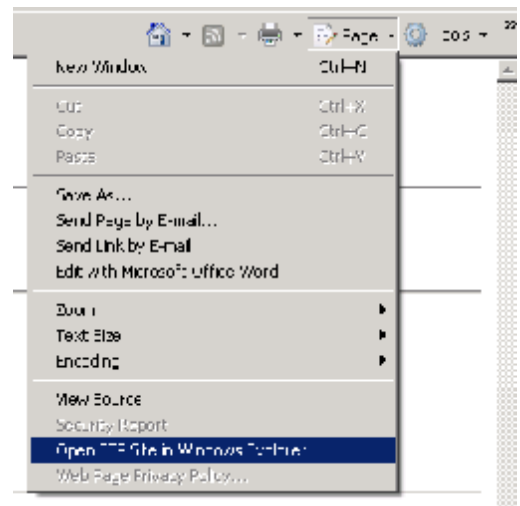
Please Note: Some screens in this instruction may contain options that do not pertain to configuring IE7 for use with Titan FTP Server. If you need additional information regarding these steps, please see the [Titan FTP User Guide](#).

Configuring your Browser

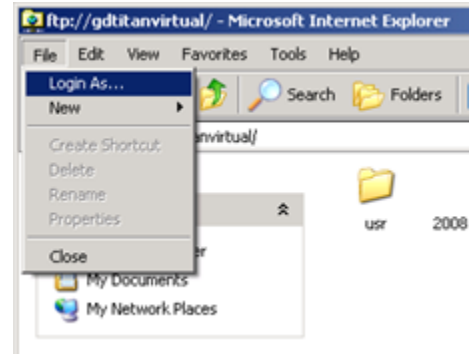
1. Launch your Internet Explorer browser. From the **Tools** menu, select **Internet Options**. Click the **Advanced** tab and select **Enable FTP Folder view (outside of Internet Explorer)**. Click **OK**.



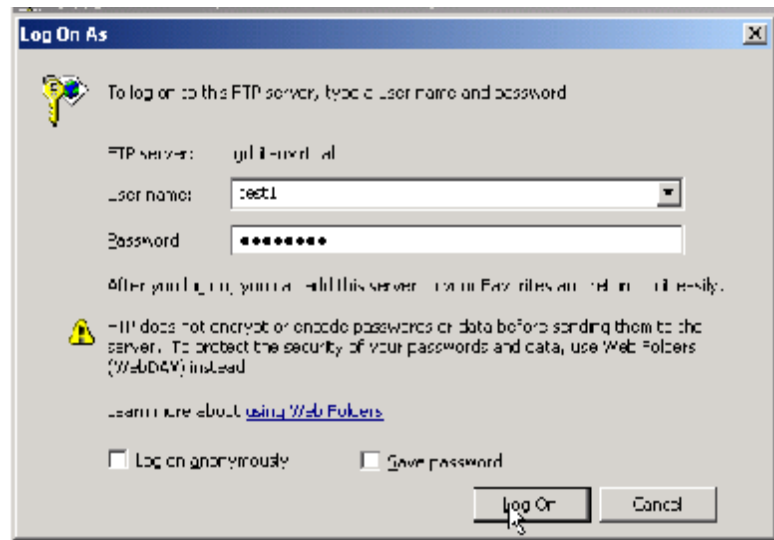
2. Type in your FTP URL into your browser's address bar. For example, **ftp://ipaddress** or **ftp://servername**. Click the **Page** drop-down menu and choose **Open FTP Site in Windows Explorer**.



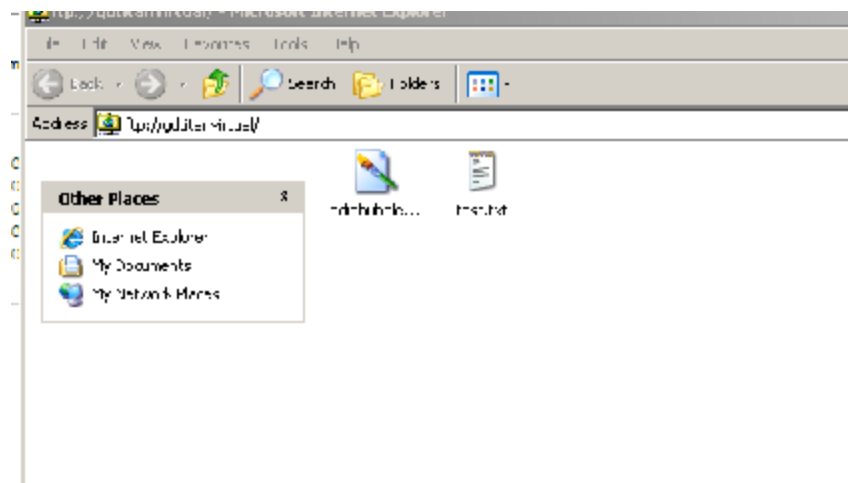
- From the **File** Menu, choose **Login As**.



- Type your logon information. Make sure that Log on anonymously is not selected. Click **Log On**.



- Drag and drop files as needed.



About South River Technologies

South River Technologies (SRT) is an innovator in managed file transfer and basic content services software. SRT's software seamlessly integrates access to remote files into the desktop applications that users rely on, creating an instantly familiar interface for collaborating, sharing, and accessing files. SRT's enterprise class server products are built using industry standard encryption, highly granular security configuration controls, and technologies to reduce the risk of network intrusions. Over 60,000 customers, including more than 70 colleges and universities, government agencies such as NASA and FAA, and other blue chip companies in more than 110 countries rely on SRT's software to make remote file access and collaboration more efficient for their customers, partners, and distributed workforce. For more information, please visit www.southrivertech.com.

Titan FTP Server® is a registered trademark of South River Technologies, Inc.

© Copyright South River Technologies, 1996-2008. All rights reserved.