



GroupDrive

**GroupDrive Collaboration Server
Windows Active Directory (AD) User Authentication
Quick Start Guide**

February 2010

Notices

Copyright 2010 South River Technologies, Inc. All rights reserved.

Information in this document is subject to change without notice. The software described in this document is furnished under a license agreement, OEM, or reseller agreement. The software may be used or copied only in accordance with the terms of those agreements. No part of this publication may be reproduced, stored in a retrieval system, or transmitted in any form or any means electronic or mechanical, including photocopying and recording for any purpose other than the purchaser's personal use without the written permission of South River Technologies, Inc.

South River Technologies[®], GroupDrive Collaboration Server[®], Cornerstone MFT[™], Titan FTP Server[®], DMZedge Server[™], and WebDrive[®] are trademarks of South River Technologies, Inc. in the U.S. and other countries. Microsoft, Windows, Windows NT, Windows XP, and Windows Vista are trademarks of Microsoft Corporation, Inc. The names of other actual companies and products mentioned herein may be the trademarks of their respective owners. Any information in this document about compatible products or services should not be construed in any way to suggest SRT endorsement of that product or service.

South River Technologies, Inc.
2635 Riva Road
Suite 100
Annapolis, Maryland 21401
USA
Telephone: 410-266-0667
Fax: 410-266-1191
www.southrivertech.com

Please Note: Some screens in this instruction contain options that do not pertain to Windows Active Directory Authentication. If you need additional information regarding these steps, please see the [GroupDrive Administrator User's Guide](#). For the purpose of this Windows Active Directory User Authentication quick start guide, we will guide you through these options without configuring additional settings. A listing of Frequently Asked Questions (FAQ) is also available at our Knowledgebase Support Center.

Configuring the Server

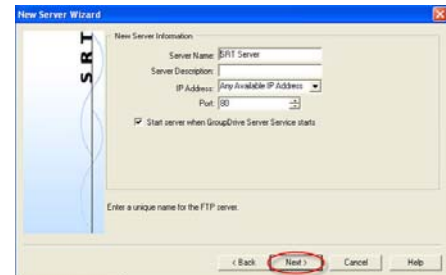
1. Run the GroupDrive *Server Administrator* and select **New Server Wizard**.



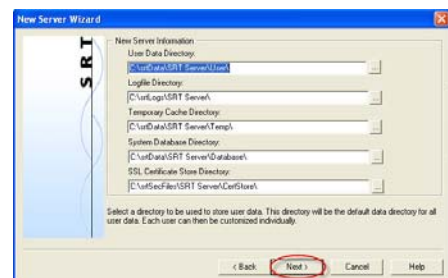
2. Select the **Server Type** (clustered or non-clustered).



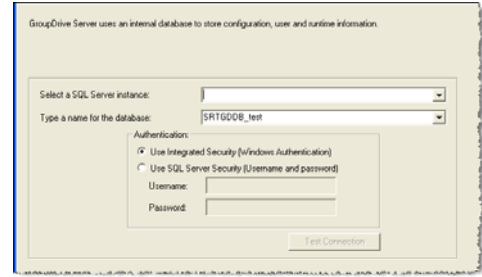
3. Type a unique **Server Name**. Click the drop-down arrow to choose your **IP Address**. (*Any available IP address* indicates that the server will listen on all IP addresses that are configured on the PC along with the local IP address of 127.0.0.0, also known as *localhost*.) Select the **Port number** by using the up/down arrows. Click **Next**.



4. Use the browse "..." buttons to browse to your **User Data Directory**, **Logfile Directory**, **Temporary Cache Directory**, **System Database Directory**, and **SSL Certificate Store Directory**. Click **Next**.

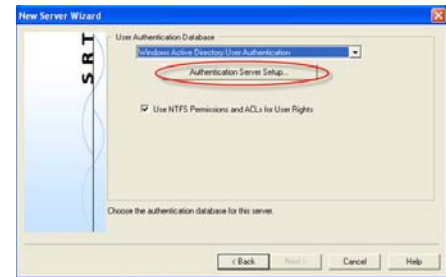


- GroupDrive uses an internal database to store configuration, user and runtime information. Use the drop-down arrow to select the **SQL Server instance**. Type the name of the **SQL database**. Select your **authentication method**. Click **Test Connection** to test the database connection to the GroupDrive server. When you are successfully connected, click **Next**.

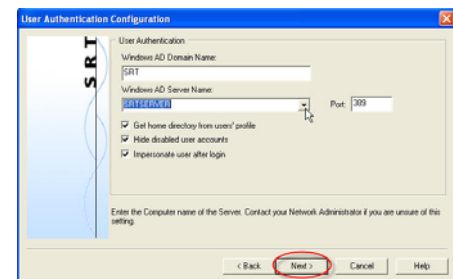


NOTE: SRT supports GroupDrive configurations using SQL Server 2005 or later or SQL Server 2005 Express or later, test or production environment. No other databases are supported.

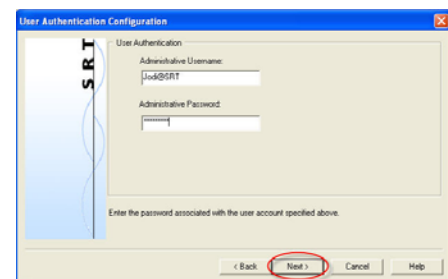
- Select **Windows Active Directory User Authentication** and then click the **Authentication Server Setup** button. This will launch the *Windows AD User Authentication sub-wizard*. Once you select a User Authentication Database option in GroupDrive, you cannot change to a different method once the server wizard has completed.



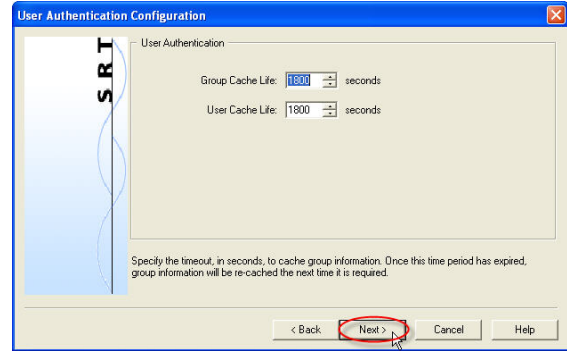
- Type your Windows AD **Domain Name**. Use the drop-down arrow to choose your Windows AD **Server Name**. Type your **port number** (the default port is 389). Select additional options using the check boxes. We recommend that you **select all three additional options**. When you are finished, click **Next**.



- Type the **Username** and **Password**. The format for the username must be: **<username@domainname>**



9. Set the **Group Cache Life*** and the **User Cache Life** using the up/down arrows. Click **Next**.



* GroupDrive Collaboration Server will cache user and group information to increase performance and decrease the load on your back end database. The number of seconds that GroupDrive caches this information is controlled by the User Cache Life and Group Cache Life values. The Group Cache Life value is used by GroupDrive to determine how long to wait before refreshing the group information and also the list of members of that group. Once the cache life has expired, GroupDrive will flag the cached group information as “stale” and the next time GroupDrive needs that group information it will reload the group properties (and the list of members of the group) from the remote database. This means that if you modify the membership of the group by adding new users, or deleting users from the group, those changes will not appear in GroupDrive until the Group Cache Life value has expired and GroupDrive reloads that information. Therefore, if you have a dynamic system where the users/groups change frequently, set the Group Cache Life value to a short value, such as 300 seconds (5 minutes).

The same applies to the User Cache Life setting. If you make a change to a user account in the back end database, these changes will not appear in GroupDrive until the User Cache Life value has expired on that user account. The exception to the rule is the user’s password. GroupDrive never caches user passwords so any changes to the user’s password in the ODBC user database will take effect immediately.

Warning: Avoid setting the Cache Life values too small. If you set the values too small, the performance could degrade because GroupDrive will be spending too much time flushing and reloading the user/group information from the database.

If you add and delete users frequently, change the Group Cache to 300 seconds.

10. Type your **Groups Base DN**, **Group Category Filter**, **Group Class Filter**, **Users Base DN**, **User Category Filter** and **User Class Filter**. * To Use **paged search**, be sure that the check box is checked. Click the **Advanced**** button for additional configuration options. When you are finished, click **Next**.



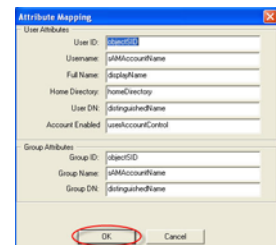
*GroupDrive needs to be configured with the proper search strings in order to locate user and group information in the Active Directory (AD). For most AD installations, the default values can be used and will return the proper user and group information from your AD. However, there are some instances where these values may need to be enhanced to allow GroupDrive to find the user information in the AD.

Group/User Base DN—These values specify the LDAP search string(s) necessary to search the various trees/paths in the AD. By default, GroupDrive will search under the **Users** and **BuiltIn** paths of your AD. Since these paths are sub-paths under the Domain that you specified, the full Distinguished Name (DN) for the search path needs to include the parent domain. To search the **USERS** path, the DN needs to be **CN=Users, DC=SRT**. If the domain name that you specified was **XYZ.COM**, then the DN would be **CN=Users,DC=XYZ,DC=COM**. Since GroupDrive will search multiple paths, each path is separated with a **semicolon**. So the complete entry to search both **Users** and **BuiltIn** is **CN=Users,DC=SRT;CN=BuiltIn,DC=SRT**.

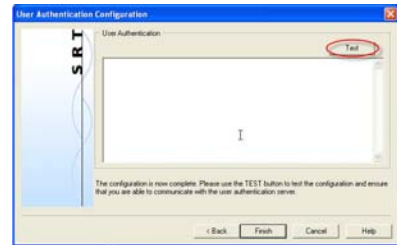
Group/User Category—These values are used to filter out certain categories of users and groups. In general you will want to include all users and groups, so this value should remain as an **asterisk**.

Group/User Class Filter—These values are used to filter out certain classes of users and groups. Multiple classes should be separated by semicolons.

** If you wish to configure **Advanced** User and Group Attributes, type your information and then click **OK**. You will then click **Next** to test your settings.

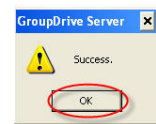


11. Click **Test*** to test the configuration and ensure that you are able to communicate with the User Authentication server.

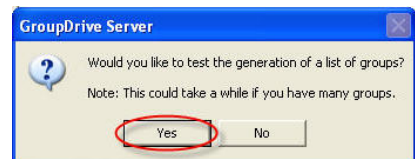


*If this process fails, the most common reason is that either the AD Domain Name is not specified correctly, or the AD Server Name is not accessible. Click the Back button to return to previous pages and adjust the values.

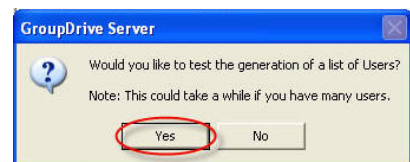
12. If GroupDrive Collaboration Server can successfully communicate with the database the message that displays is *Success*. Click **OK**. (If an error is displayed, either GroupDrive was not able to connect to the database, or there was a problem with the back- end database.)



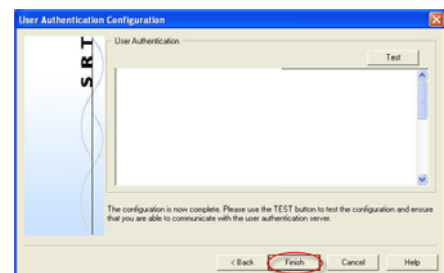
13. After GroupDrive successfully connects to the database, GroupDrive will attempt to generate a list of groups. Click **Yes** to test the generation of a list of groups.



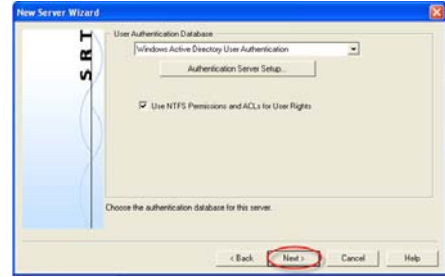
14. Click **Yes** to test the generation of a list of Users.



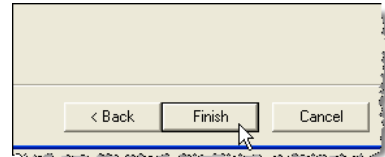
15. Click **Finish**.



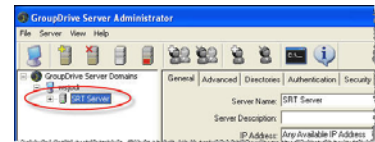
16. You are now returned to the *GroupDrive New Server Wizard*. Click **Next**.



17. The wizard will walk you through the steps for configuring your **SMTP Mail Server** for your **Administrator Account**. Click **Finish** to create the server.

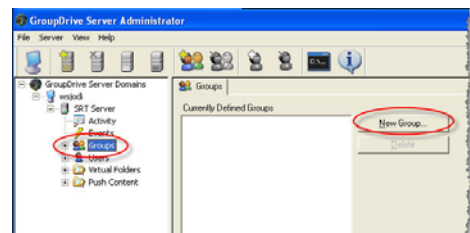


18. Once the server is created, the server starts and appears in the main *GroupDrive Administrator* window. A green icon appears to indicate that the server is running. At this point, there are no external groups or users mapped to GroupDrive Collaboration Server. *

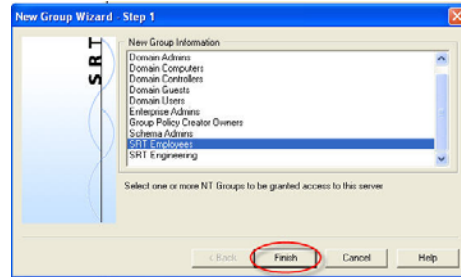


***PLEASE NOTE:** All GroupDrive Server users must belong to a group. Before any users can access the system, you must add one or more groups to the server. Because GroupDrive Collaboration Server uses the Windows Active Directory user database, groups that will participate in the GroupDrive Server must be selected/mapped into GroupDrive Collaboration Server from the Active Directory database. To do this, you must run the *New Group Wizard* to add a new group to the GroupDrive Server.

19. Expand the server menu and click **Groups**. Click **New Group** to launch the New Group Wizard.



20. Select one or more Groups to be granted access to this server. Click **Finish**.



21. It is now time to test the server. To test the server, right-click on the Server in the *GroupDrive Administrator* and select **Launch Browser**. Then log on with your credentials.



About South River Technologies

South River Technologies (SRT) is an innovator in managed file transfer and document collaboration software. SRT's software seamlessly integrates access to remote files into the desktop applications that users rely on, creating an instantly familiar interface for collaborating, sharing, and accessing files. SRT's enterprise class server products are built using industry standard encryption, highly granular security configuration controls, and technologies to reduce the risk of network intrusions. Over 60,000 customers, including more than 70 colleges and universities, government agencies such as NASA and FAA and other blue chip companies in more than 110 countries rely on SRT's software to make remote file access and collaboration more efficient for their customers, partners, and distributed workforce. For more information, please visit www.southrivertech.com.