



GroupDrive

**GroupDrive Collaboration Server
Open Database Connectivity (ODBC) User Authentication
Quick Start Guide**

February 2010

Notices

Copyright 2010 South River Technologies, Inc. All rights reserved.

Information in this document is subject to change without notice. The software described in this document is furnished under a license agreement, OEM, or reseller agreement. The software may be used or copied only in accordance with the terms of those agreements. No part of this publication may be reproduced, stored in a retrieval system, or transmitted in any form or any means electronic or mechanical, including photocopying and recording for any purpose other than the purchaser's personal use without the written permission of South River Technologies, Inc.

South River Technologies[®], GroupDrive Collaboration Server[®], Cornerstone MFT[™], Titan FTP Server[®], DMZedge Server[™], and WebDrive[®] are trademarks of South River Technologies, Inc. in the U.S. and other countries. Microsoft, Windows, Windows NT, Windows XP, and Windows Vista are trademarks of Microsoft Corporation, Inc. The names of other actual companies and products mentioned herein may be the trademarks of their respective owners. Any information in this document about compatible products or services should not be construed in any way to suggest SRT endorsement of that product or service.

South River Technologies, Inc.
2635 Riva Road
Suite 100
Annapolis, Maryland 21401
USA
Telephone: 410-266-0667
Fax: 410-266-1191
www.southrivertech.com

Please Note: Some screens in this instruction contain options that do not pertain to ODBC Authentication. If you need additional information regarding these steps, please see the [GroupDrive Administrator User's Guide](#). For the purpose of this ODBC User Authentication quick start guide we will guide you through these options without configuring additional settings.

Table of Contents

NOTICES.....	I
TABLE OF CONTENTS	1
CONFIGURING THE SERVER	2
APPENDIX: DATABASE SCHEMA COLUMN DESCRIPTIONS	11
SCHEMA EXAMPLE	13

Configuring the Server

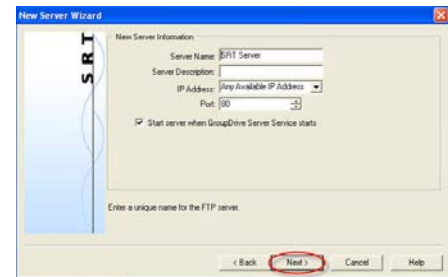
1. Run the GroupDrive *Server Administrator* and select **New Server Wizard**.



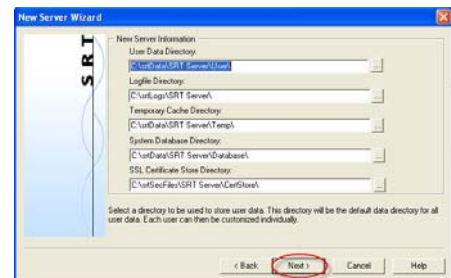
2. Select the **Server Type** (clustered or non-clustered).



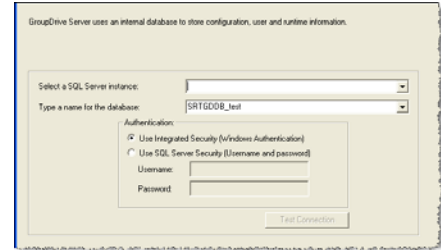
3. Type a unique **Server Name**. Click the drop-down arrow to choose your **IP Address**. (*Any available IP address* indicates that the server will listen on all IP addresses that are configured on the PC along with the local IP address of 127.0.0.0, also known as *localhost*.) Select the **Port number** by using the up/down arrows. Click **Next**.



4. Use the browse "..." buttons to browse to your **User Data Directory**, **Logfile Directory**, **Temporary Cache Directory**, **System Database Directory**, and **SSL Certificate Store Directory**. Click **Next**.

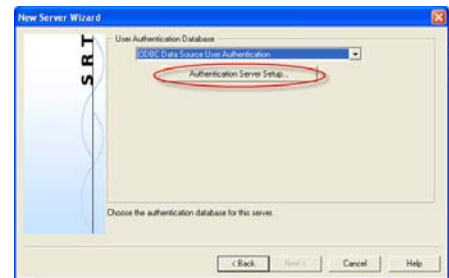


- GroupDrive uses an internal database to store configuration, user, and runtime information. Use the drop-down arrow to select the **SQL Server Instance**. Type the name of the **SQL Database**. Select your **Authentication Method**. Click **Test Connection** to test the server connection to the database. When you are successfully connected, click **Next**.

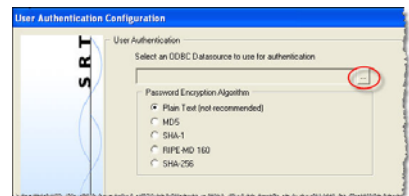


NOTE: SRT supports GroupDrive configurations using SQL Server 2005 or later or SQL Server 2005 Express or later, test or production environment. No other databases are supported.

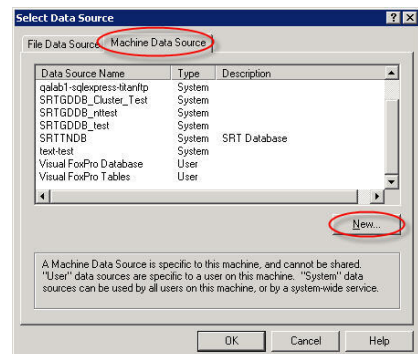
- Using the drop-down arrow, select **ODBC Data Source User Authentication** and then click the **Authentication Server Setup** button. This will launch the *Windows ODBC User Authentication sub-wizard*.



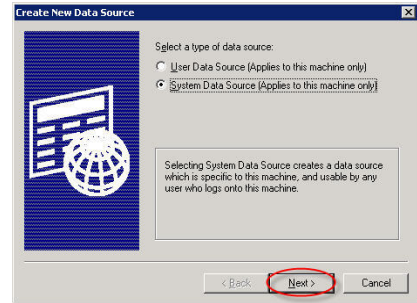
- The *ODBC Data Source Manager* will allow you to create a new ODBC data source or to select an existing ODBC data source. This data source will store the group, user, and membership information to be used by GroupDrive Server. Click the **browse** "... " button to launch the *ODBC Data Source Manager*.



- Select the **Machine Data Source** tab. Click **NEW** to set up a new data source. If your data source is already listed, select your data source from the list.



- The *ODBC Administrator Wizard* will launch. To set up a System Data Source, make sure that **System Data Source*** is selected and then click **Next**.



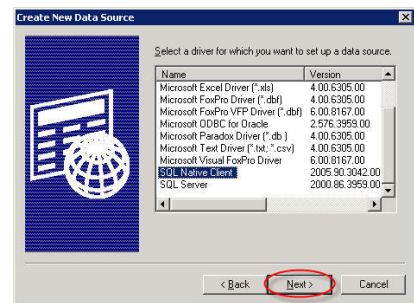
*GroupDrive Server runs as a system service and requires a system data source.

The ODBC data source configuration options vary based on your specific ODBC database. If you are using a database other than SQL Server, see your database's ODBC help system for instructions on configuring an ODBC data source for that database.

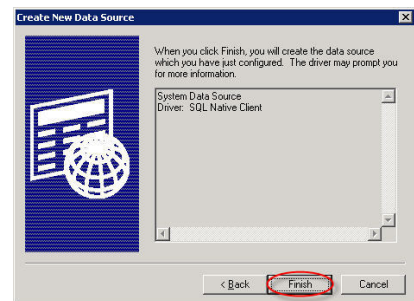
NOTE: SRT supports SQL Server 2005 or later or SQL Server Express 2005 or later.

Database Schema Column Descriptions and Schema Example, see [Appendix A](#).

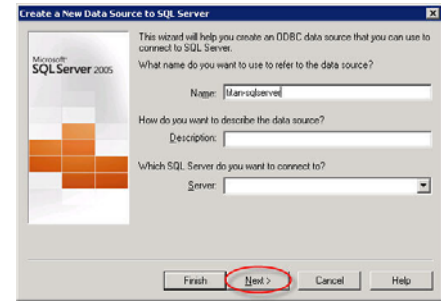
- From the list of available ODBC drivers, select **SQL Native Client** and then click **Next**.



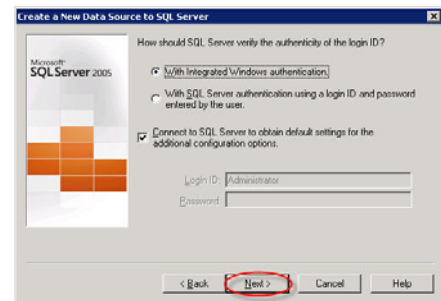
- Click **Finish** to create the data source.



12. Type the name of your **data source**. We have named our data source *titan-sqlserver*. Use the drop-down arrow to choose the SQL server that you would like to connect to and then click **Next**.

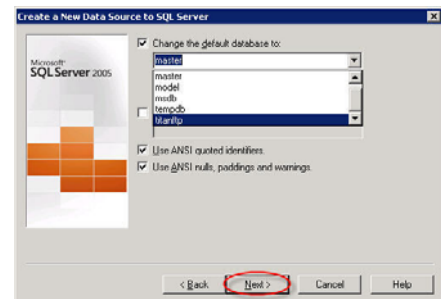


13. Choose your preferred **authentication method**. We have chosen *Integrated Windows authentication*. Select the check box to connect to SQL Server to obtain default settings for additional configuration options.* Click **Next**.

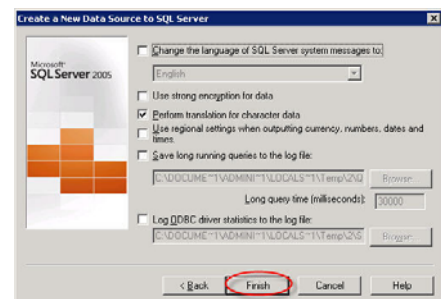


*GroupDrive Collaboration Server will now attempt to log you on to the server. If you receive an error message, contact your SQL Server Administrator.

14. Select the check box to change the **default database**. We recommend that you **do not** use the master database. Choose your database using the down arrow. Click **Next**.



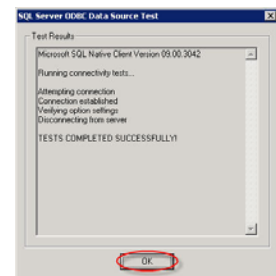
15. Keep the default settings and click **Finish**.



16. Click **Test Data Source**.

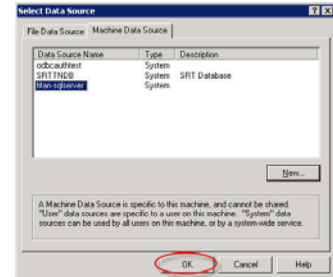


17. You should see the *Tests Completed Successfully* message.*
Click **OK**.

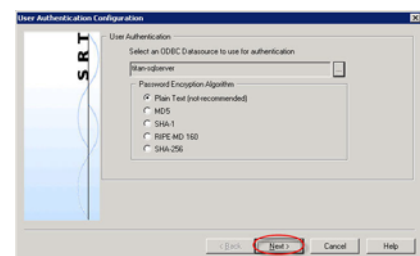


*If you receive an error message please contact your SQL Server Administrator.

18. You now have the ODBC System/Machine Data Source configured to point to the sample SQL Server database. Click **OK** to return to the *GroupDrive Server Wizard*.

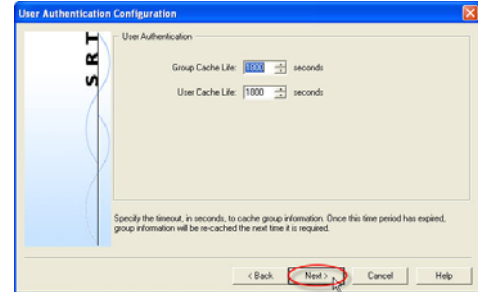


19. The groupdrive-sqlserver data source name is now displayed in the window. Click **Next**.



***Please note:** Plain Text is **not recommended** for production systems. It is used here for illustration purposes only. Also, if you need to be FIPS (Federal Information Processing Standard 140) compliant you cannot use RIPE-MD 160. The password format that you choose must match the encryption technique that you use.

20. Set the **Group Cache Life*** and the **User Cache Life** using the up/down arrows. Click **Next**.



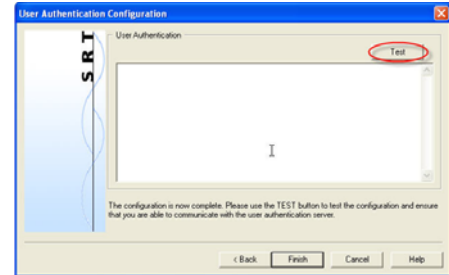
* GroupDrive Collaboration Server will cache user and group information to increase performance and decrease the load on your back-end database. The number of seconds that GroupDrive caches this information is controlled by the User Cache Life and Group Cache Life values. The Group Cache Life value is used by GroupDrive to determine how long to wait before refreshing the group information and also the list of members of that group. Once the cache life has expired, GroupDrive will flag the cached group information as “stale” and the next time GroupDrive needs that group information it will reload the group properties (and the list of members of the group) from the remote database. This means that if you modify the membership of the group by adding new users, or deleting users from the group, those changes will not appear in GroupDrive until the Group Cache Life value has expired and GroupDrive can reload that information. Therefore, if you have a dynamic system where the users/groups change frequently, set the Group Cache Life value to a short value, such as 300 seconds (5 minutes).

The same applies to the User Cache Life setting. If you make a change to a user account in the back-end database, these changes will not appear in GroupDrive until the User Cache Life value has expired on that user account. The exception to the rule is the user’s password. GroupDrive never caches user passwords so any changes to the user’s password in the ODBC user database will take effect immediately.

Warning: Avoid setting the Cache Life values too small. If you set the values too small, the performance could degrade because GroupDrive will be spending too much time flushing and reloading the user/group information from the database.

If you add and delete users frequently, change the Group Cache to 300 seconds.

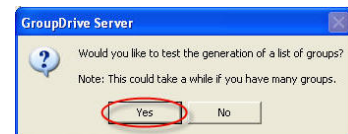
21. After you have configured your data source, click **Test** to test the configuration and ensure that you are able to communicate with the User Authentication server.



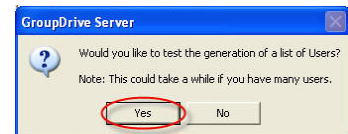
22. If GroupDrive Collaboration Server can successfully communicate with the database the message that displays is *Success*. Click **OK**. (If an error is displayed, either GroupDrive was not able to connect to the database, or there was a problem with the back-end database.)



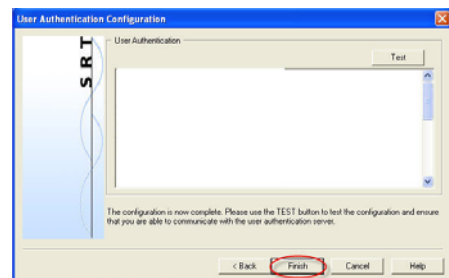
23. After GroupDrive successfully connects to the database, GroupDrive will attempt to generate a list of groups. Click **Yes** to test the generation of a list of groups.



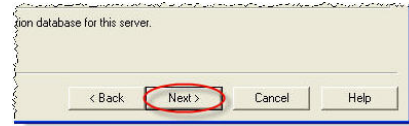
24. Click **Yes** to test the generation of a list of Users.



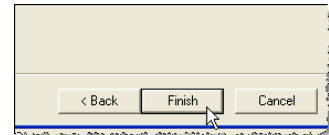
25. Click **Finish**.



26. You are now returned to the *GroupDrive New Server Wizard*. Click **Next**.



27. The wizard will walk you through the steps for configuring your **SMTP Mail Server** and your **Administrator User Account**. Click **Finish** to create the server.

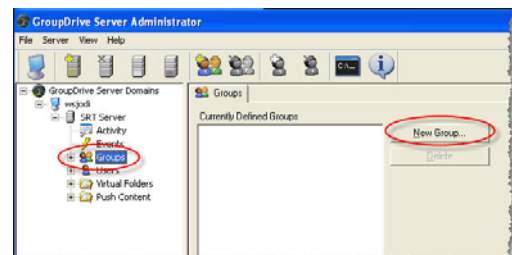


28. Once the server is created, the server starts and appears in the main *GroupDrive Administrator window*. A green icon appears to indicate that the server is running. At this point, there are no external groups or users mapped to GroupDrive Collaboration Server.*

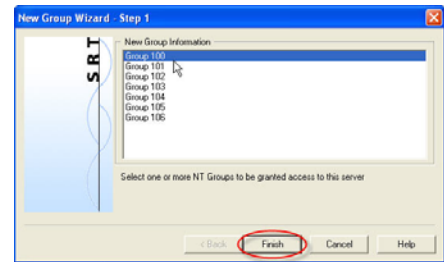


***PLEASE NOTE:** All GroupDrive Server users must belong to a group. Before any users can access the system, you must add one or more groups to the server. Because GroupDrive Collaboration Server uses the ODBC user database, groups that will participate in the GroupDrive Server must be selected/mapped into GroupDrive Collaboration Server from the ODBC database. To do this, you must run the *New Group Wizard* to add a new group to the GroupDrive Server.

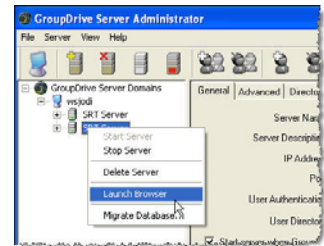
29. Expand the server menu and click **Groups**. Click **New Group** to launch the New Group Wizard.



30. Select one or more Groups to be granted access to this server. Click **Finish**.



31. It is now time to test the server. To test the server, right-click on the Server in the *GroupDrive Administrator* and select **Launch Browser**. Then log on with your credentials.



Appendix: Database Schema Column Descriptions

Table: sr_uagroups

This table stores the group lists that GroupDrive accesses by way of the GroupDrive Administration utility.

- **groupid** – This is a 4-byte numeric value that uniquely identifies each group in the system. Group ID's must be numbers only, must be unique, and must be within the range of 100-999.
- **gname** – This is a text field that stores a human readable name associated with the group. This field must contain alpha-numeric printable/readable ASCII characters only. The maximum length of a group name in GroupDrive Collaboration Server is 131 characters.
- **gdesc** – This is a text field that stores a human readable description associated with a group. This field must contain alpha-numeric printable/readable ASCII characters only. The maximum length of a group description in GroupDrive Collaboration Server is 131 characters.

Table: sr_uasers

This table stores the list of users who can be granted access to the GroupDrive server. Since GroupDrive is a "group" based server, only users who are members of a group included in GroupDrive Collaboration Server will be permitted to access the server.

- **userid** – This is a 4-byte numeric value that uniquely identifies each user in the system. User ID's must be numbers only, must be unique, and must be within the range of 1000-2,000,000.
- **uname** – This is a text field that stores the user name for a user. This field must contain alpha-numeric printable/readable ASCII characters only. No spaces are permitted in a user name. User names are not case sensitive; however, using only lowercase characters in a user name is recommended. The maximum length of a user name in GroupDrive is 131 characters.
- **upass** – This text field contains either the user's password, or a hash of the user's password depending on the type of password masking that has been chosen in the GroupDrive Administrator during the setup process. GroupDrive currently supports Plaintext, MD5, SHA-1, RIPE-MD-160, and SHA-256 hashing algorithms for passwords.
- **ufullname** – This text field contains the user's full name. This field must contain alpha-numeric printable/readable ASCII characters only. This field allows a maximum length of 131 characters.

- **uhomedir** – This text field contains the fully qualified path for the user’s home directory. This can be a local path or a UNC (Universal Naming Convention) that points to a remote data location. Note: do not use a mapped drive letter. GroupDrive runs as a system service so it does not have access to mapped drives which are “user” based. Use a UNC instead.
- **uenabled** – This Boolean field tells GroupDrive if the user account is enabled or disabled. If this value is 1, then the user will be permitted to log on to the GroupDrive server. If this value is 0, the user will not be permitted to log on to the GroupDrive server even if they specify a valid password.

Table: sr_uamembers

This table stores a mapping of Users to Groups. Since GroupDrive Collaboration Server is a Group based server, users must belong to a group that has been included in the GroupDrive Administrator.

- **'groupid'** – This field contains the unique Group ID for the group that will be allowed to access the GroupDrive server.
- **'userid'** – This field contains the unique User ID for the user that will be a member of the group accessing GroupDrive.

Schema Example

Table: sr_uagroups

Name	Type	Size
groupid	Long Integer	4
gname	Text	132
gdesc	Text	132

Table: sr_uusers

Name	Type	Size
userid	Long Integer	4
uname	Text	132
upass	Text	132
ufullname	Text	132
uhomedir	Text/Memo	1024
uenabled	Long Integer	4

Table: sr_uamembers

Name	Type	Size
groupid	Long Integer	4
userid	Long Integer	4